

Rittal – The System.

Faster – better – everywhere.



IW 6141.200 Pedestal, complete

State: 9/22/2023 (Source: rittal.com/us-en)

ENCLOSURES

POWER DISTRIBUTION

CLIMATE CONTROL

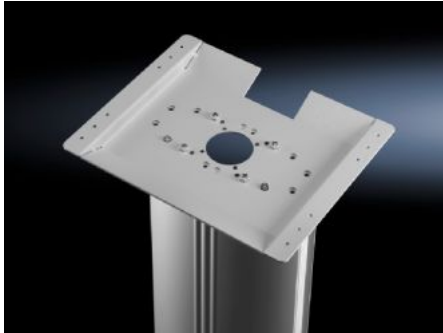
IT INFRASTRUCTURE

SOFTWARE & SERVICES

FRIEDHELM LOH GROUP



IW 6141.200 - Pedestal, complete for IW worktops



Features

Model No.	IW 6141.200
Version	Stationary
Benefits	Reliable protection of cable management
Color	RAL 7035
Supply includes	Cross member Vertical aluminum panel molding, may be opened Worktop attachment
Load capacity, static	25 kg 55.1 lb.
Dimensions	Width: 600 mm Height: 946 mm Depth: 660 mm Width: 23.6 " Height: 37.2 " Depth: 26 "
Packaging unit	1 pc(s).
Weight/packaging unit	33.65 kg 74.2 lb.
Customs tariff number	94039910
EAN	4028177305762
ETIM 7.0	EC002534

Features

ECLASS 8.0

27182604

Approvals

Approvals

GOST